

Hurricane Harvey's Impact

Patrick Jankowski

Senior Vice President

Greater Houston Partnership

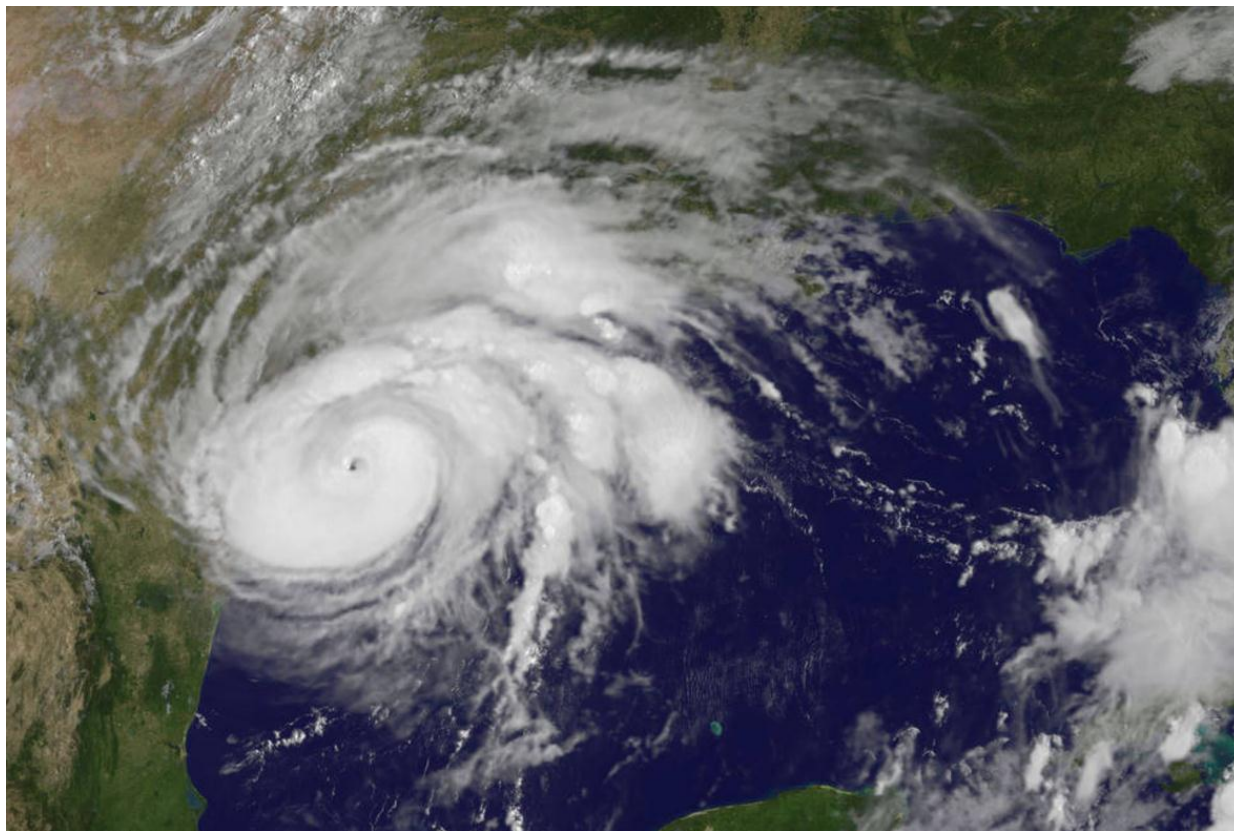


GREATER HOUSTON
PARTNERSHIP

Making Houston Greater.

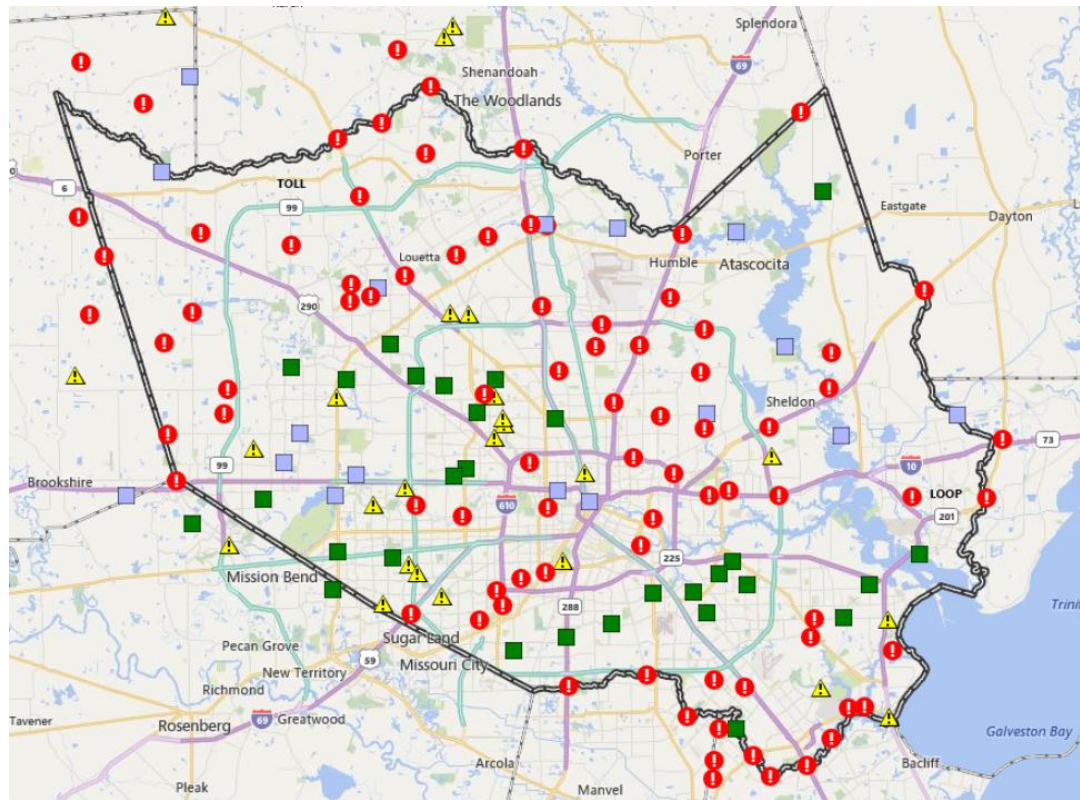


Pinwheel vs. Waterwheel





Rain Event vs. Wind Event



- Channel Status not Defined
- Water in Bank
- Near Top of Bank
- Out of Bank

- Enki Research
 - ▶ \$48 - \$75 billion
- Imperial Capital
 - ▶ +\$100 billion
- AccuWeather
 - ▶ \$190 billion



- No economic activity for nearly a week
- 60+ deaths
- 58 Texas counties declared disaster areas
- 52,007 rescues
- FEMA Assistance
 - ▶ 240 shelters activated
 - ▶ 53,000 evacuees in hotels
 - ▶ 34,000 still in shelters

Source: Texas Department of Public Safety



- 30% of Harris County under water at one time
- 185,000 homes damaged
- 9,000 Homes destroyed
- 580,000 applications filed with FEMA

Sources: Local media reports



Why didn't Houston evacuate?





Why so few with flood insurance?





GREATER HOUSTON
PARTNERSHIP

The new role of social media



facebook



The long-term impact

